

DIAGRAMS

Trademarks:

Canon Inc.'s trademark, logos, product names, service marks and those trademark, logos, product names, service marks licensed to Canon Inc. by any of its affiliate or subsidiary are registered or unregistered marks of Canon Inc. or such affiliate or subsidiary in Japan and/or other countries.

Adobe, the Adobe logo, Acrobat, the Acrobat logo and Reader are either registered trademarks or trademarks of Adobe Systems Incorporated in the United States of America and/or other countries. All other trademarks, product names, service marks are generally either registered or unregistered marks of their respective owners.

Copyright:

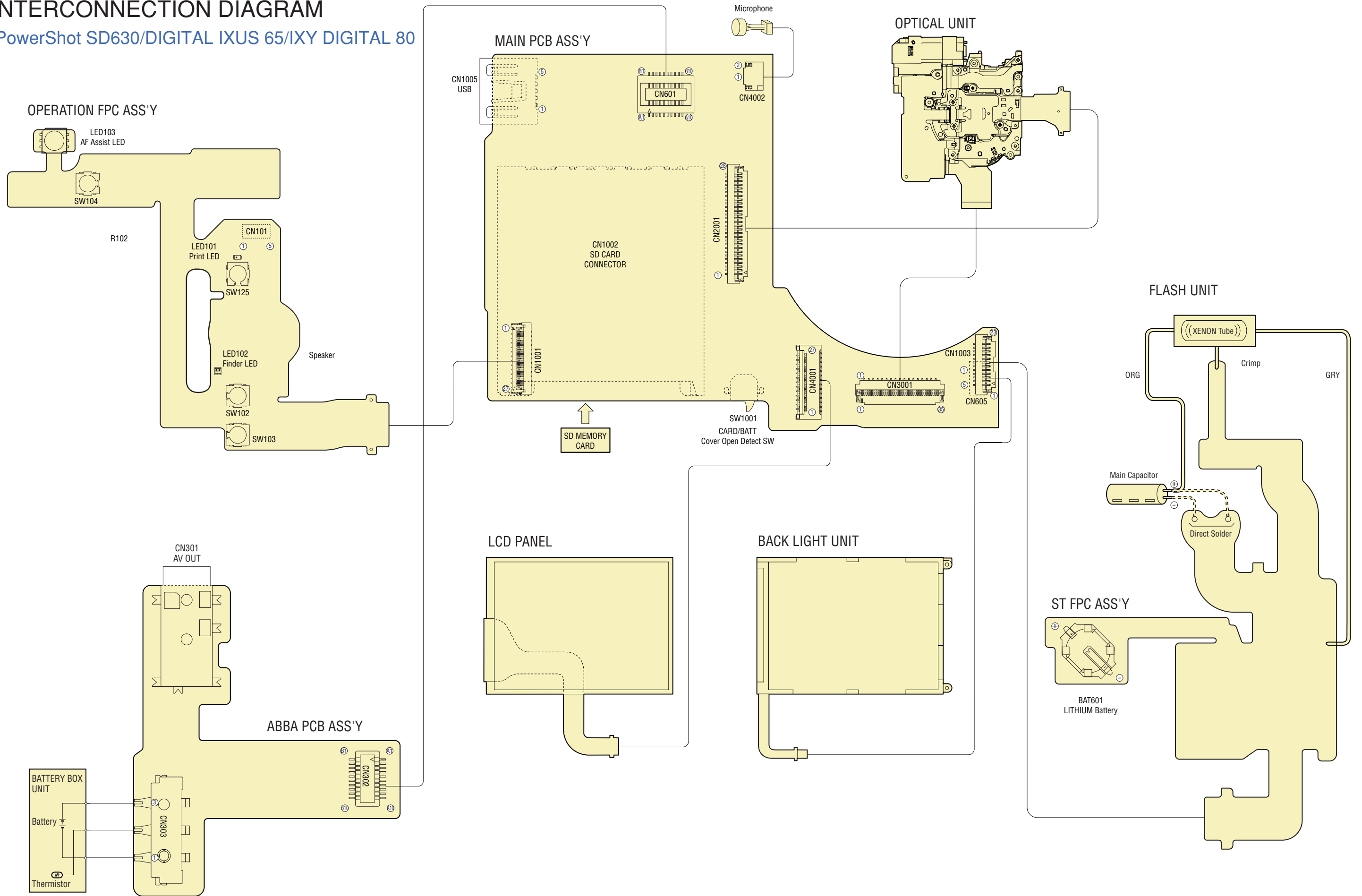
All copyrights in the content of this Service Manual are owned or controlled by Canon Inc. You are not permitted to copy, reproduce, download, modify, adapt or translate in any way the content of this Service Manual for any purpose other than the purpose contemplated herein without prior written consent of Canon Inc.

CONTENTS

1. INTERCONNECTION DIAGRAM
 - 1.1 PowerShot SD630/DIGITAL IXUS 65/
IXY DIGITAL 80
 - 1.2 PowerShot SD600/DIGITAL IXUS 60/
IXY DIGITAL 70
2. BLOCK DIAGRAMS
 - 2.1 PowerShot SD630/DIGITAL IXUS 65/
IXY DIGITAL 80
 - 2.1.1 OVERALL
 - 2.1.2 MAIN PCB ASS'Y (1/3)
(PowerShot SD630/DIGITAL IXUS 65/
IXY DIGITAL 80)
 - 2.1.3 MAIN PCB ASS'Y (2/3)
(PowerShot SD630/DIGITAL IXUS 65/
IXY DIGITAL 80)
 - 2.1.4 MAIN PCB ASS'Y (3/3)
(PowerShot SD630/DIGITAL IXUS 65/
IXY DIGITAL 80)
 - 2.2 PowerShot SD600/DIGITAL IXUS 60/
IXY DIGITAL 70
 - 2.2.1 OVERALL
 - 2.2.2 MAIN PCB ASS'Y (1/2)
(PowerShot SD600/DIGITAL IXUS 60/
IXY DIGITAL 70)
 - 2.2.3 MAIN PCB ASS'Y (2/2)
(PowerShot SD600/DIGITAL IXUS 60/
IXY DIGITAL 70)
 - 2.2.4 DC/DC PCB ASS'Y
(PowerShot SD600/DIGITAL IXUS 60/
IXY DIGITAL 70)
 - 2.3 Abbreviation in Block Diagrams
3. P.C.B. DIAGRAMS
 - 3.1 MAIN PCB ASS'Y
(PowerShot SD630/DIGITAL IXUS 65/
IXY DIGITAL 80)
 - 3.2 ST FPC ASS'Y
(PowerShot SD630/DIGITAL IXUS 65/IXY
DIGITAL 80)
 - 3.3 ABBA PCB ASS'Y
(PowerShot SD630/DIGITAL IXUS 65/IXY
DIGITAL 80)
 - 3.4 OPT FPC
(PowerShot SD630/DIGITAL IXUS 65/
IXY DIGITAL 80)
 - 3.5 OPERATION FPC ASS'Y
(PowerShot SD630/DIGITAL IXUS 65/IXY
DIGITAL 80)
 - 3.6 CCD FPC
(PowerShot SD630/DIGITAL IXUS 65/IXY
DIGITAL 80)
 - 3.7 MAIN PCB ASS'Y
(PowerShot SD600/DIGITAL IXUS 60/
IXY DIGITAL 70)
 - 3.8 DC/DC PCB ASS'Y
(PowerShot SD600/DIGITAL IXUS 60/
IXY DIGITAL 70)
 - 3.9 ST FPC ASS'Y
(PowerShot SD600/DIGITAL IXUS 60/IXY
DIGITAL 70)
 - 3.10 OPERATION FPC ASS'Y
(PowerShot SD600/DIGITAL IXUS 60/IXY
DIGITAL 70)
 - 3.11 CCD FPC
(PowerShot SD600/DIGITAL IXUS 60/IXY
DIGITAL 70)
 - 3.12 LCD FPC
(PowerShot SD600/DIGITAL IXUS 60/IXY
DIGITAL 70)

1. INTERCONNECTION DIAGRAM

1.1 PowerShot SD630/DIGITAL IXUS 65/IXY DIGITAL 80



CONNECTORS

PowerShot SD630/DIGITAL IXUS 65/IXY DIGITAL 80

MAIN PCB ASS'Y

CN605	
1	BL_A
2	Not Connected
3	BL_C
4	Not Connected
5	BL_A
CN601	
A1	A_OUT
A2	V_OYT
A3	Not Connected
A4	GND
A5	GND
A6	GND
A7	BATTHM
A8	VBATT
A9	VBATT
A10	VBATT
B1	AV_GND
B2	AV_GND
B3	VC_DET
B4	GND
B5	GND
B6	GND
B7	BATTHM
B8	VBATT
B9	VBATT
B10	VBATT
CN1001	
1	FND_LED_ORANGE
2	FND_LED_GREEN
3	/RIGHT
4	/UP
5	/DOWN
6	/SET
7	/DIRECT_PRT
8	SCAN
9	/LEFT
10	/MENU
11	DIRECT_PRT_LED
12	GND
13	AD_AIN[1]
14	VDD1A-3.0
15	VDD1-3.3
16	SP+
17	SP-
18	AF_LED_CA
19	/SW1
20	/SW2
21	/ZOOM_WIDE
22	/DISP
23	/ZOOM_TELE
24	SW_POWER
25	VBATT
26	/MOVIE
27	/PLAY
CN1002	
1	CD/DAT3
2	CMD
3	VSS1
4	VDD
5	CLK
6	VSS2

7	DAT0
8	DAT1
9	DAT2
10	WP
11	COMMON
12	CD
13	GND1
14	GND2
CN1003	
1	Litium+
2	Litium-
3	AD_AIN[11]
4	VBATT
5	VBATT
6	VBATT
7	GND
8	GND
9	GND
10	STRB_CHG
11	VDD1-3.3
12	STRB_FLASH
CN1005	
1	VBUS
2	D-
3	D+
4	Not Connected
5	UV_GND
CN2001	
1	VOUT
2	VDD
3	GND
4	RG
5	H1B
6	H2B
7	H1A
8	H2A
9	GND
10	SUB
11	CSUB
12	VL
13	V1A
14	V1B
15	V2
16	V3A
17	V3B
18	VST
19	V4
20	V5A
21	V5B
22	VHLD
23	V6
24	V7A
25	V7B
26	V8
27	GND
28	CCD_THM
CN3001	
1	ND+
2	ND+
3	ND-
4	ND-
5	NC(GND)

6	NC(GND)
7	SH+
8	SH+
9	SH-
10	SH-
11	ZM_RST_COM
12	ZM_RST_AN
13	ZM_RST_EM
14	ZM-
15	ZM-
16	ZM-
17	ZM-
18	ZM-
19	ZM+
20	ZM+
21	ZM+
22	ZM+
23	ZM+
24	AF_RST_AN
25	AF_RST_COM
26	AF_RST_EM
27	ZM_PI1_AN
28	ZM_PI1_EM
29	ZM_PI2_EM
30	ZM_PI_COM
31	ZM_PI2_AN
32	AFB+
33	AFB-
34	AFA-
35	AFA+
CN4002	
1	MIC
2	MIC_GND
CN4001	
1	VCOM
2	VDD
3	CKH1
4	XCKH1
5	CKH2
6	XCKH2
7	STH
8	XSTH
9	CSH
10	VSS
11	G
12	R
13	B
14	Vref
15	VVSS
16	OEV
17	CKV
18	STV
19	CSV
20	OEVE
21	PCG
22	Vpre
23	VVDD
24	CKD1
25	CKD2
26	VCOM
27	VCOM

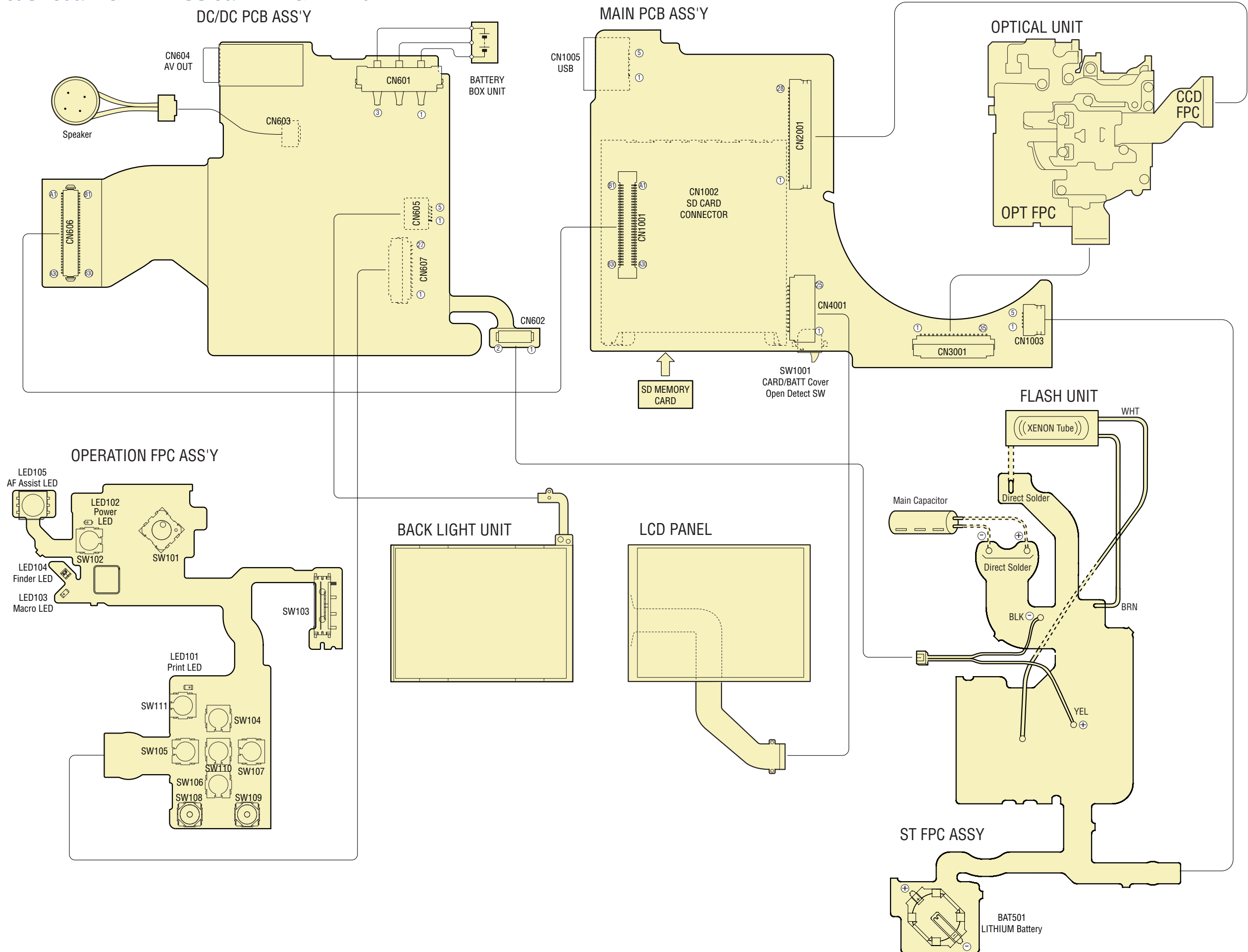
ABBA PCB ASS'Y

CN301	
1	UV_GND
2	UV_GND
3	UV_GND
4	VIDEO
5	AUDIO
6	VC_DET
CN302	
A1	A_OUT
A2	V_OYT
A3	Not Connected
A4	GND
A5	GND
A6	GND
A7	BATTHM
A8	VBATT
A9	VBATT
A10	VBATT
B1	AV_GND
B2	AV_GND
B3	VC_DET
B4	GND
B5	GND
B6	GND
B7	BATTHM
B8	VBATT
B9	VBATT
B10	VBATT
CN303	
1	GND
2	BATTHM
3	VBATT

OPR FPC

CN101	
1	VDD1A-3.0
2	Not Connected
3	GND
4	Not Connected
5	AD_AIN[1]

1.2 PowerShot SD600/DIGITAL IXUS 60/IXY DIGITAL 70



CONNECTORS

PowerShot SD600/DIGITAL IXUS 60/IXY DIGITAL 70

MAIN PCB ASS'Y

CN1001	
A1	SP-
A2	SP+
A3	GND
A4	GND
A5	GND
A6	VBATT
A7	VBATT
A8	VBATT
A9	VDD1-1.2
A10	VDD1A-3.3
A11	VDD1-2.5
A12	VDD1-3.3
A13	VDD1-3.3
A14	E1PLAT
A15	E20LAT
A16	E2LAT
A17	E3LAT
A18	SCAN
A19	FND_LED_GREEN
A20	/MOVIE
A21	/LEFT
A22	/RIGHT
A23	/MENU
A24	F_TOUCH
A25	LCD_BL_CNTL
A26	VBATTEMP
A27	/DOWN
A28	/DISP
A29	/PLAY
A30	/ZOOM_TELE
B1	A_OUT
B2	V_OUT
B3	AVJACK_DET
B4	GND
B5	GND
B6	Not Connected
B7	VBATT
B8	VBATT
B9	VDD1-1.2
B10	VDD1-1.2
B11	VDD1-2.5
B12	VDD1-3.3
B13	VDD1-3.3
B14	VDD2-3.3
B15	VDD2-3.3
B16	VDD2-N8.5
B17	VDD2-13.0
B18	Not Connected
B19	PWR_LED_GREEN
B20	/SW1
B21	/ZOOM_WIDE
B22	AF_LED_CA
B23	/UP
B24	/SET
B25	/DIRECT_PRT
B26	DIRECT_PRT_LED
B27	FND_LED_YELLOW
B28	FND_LED_ORANGE
B29	SW_POWER
B30	/SW2

CN1002	
1	CD/DAT3
2	CMD
3	VSS1
4	VDD
5	CLK
6	VSS2
7	DAT0
8	DAT1
9	DAT2
10	WP
11	COMMON
12	CD
13	GND1
14	GND2
CN1003	
1	Litium+
2	Litium-
3	VCHGLVL
4	STRB_FLASH
5	STRB_CHG
CN1005	
1	VBUS
2	D-
3	D+
4	Not Connected
5	UV_GND
CN2001	
1	VOUT
2	VDD
3	GND
4	RG
5	H1B
6	H2B
7	H1A
8	H2A
9	GND
10	SUB
11	CSUB
12	VL
13	V1A
14	V1B
15	V2
16	V3A
17	V3B
18	VST
19	V4
20	V5A
21	V5B
22	VHLD
23	V6
24	V7A
25	V7B
26	V8
27	GND
28	CCD_THM

CN3001	
1	ND+
2	ND+
3	ND-
4	ND-
5	NC(GND)
6	NC(GND)
7	SH+
8	SH+
9	SH-
10	SH-
11	ZM_RST_COM
12	ZM_RST_AN
13	ZM_RST_EM
14	ZM-
15	ZM-
16	ZM-
17	ZM-
18	ZM-
19	ZM+
20	ZM+
21	ZM+
22	ZM+
23	ZM+
24	AF_RST_AN
25	AF_RST_COM
26	AF_RST_EM
27	ZM_PI1_AN
28	ZM_PI1_EM
29	ZM_PI2_EM
30	ZM_PI_COM
31	ZM_PI2_AN
32	AFB+
33	AFB-
34	AFA-
35	AFA+
CN4001	
1	VCOM
2	VDD
3	CKH1
4	XCKH1
5	CKH2
6	XCKH2
7	STH
8	XSTH
9	CSH
10	VSS
11	G
12	R
13	B
14	Vref
15	VVSS
16	OEV
17	CKV
18	STV
19	CSV
20	OEVE
21	PCG
22	Vpre
23	VVDD
24	CKD1
25	CKD2
26	VCOM
27	VCOM

DC/DC PCB ASS'Y

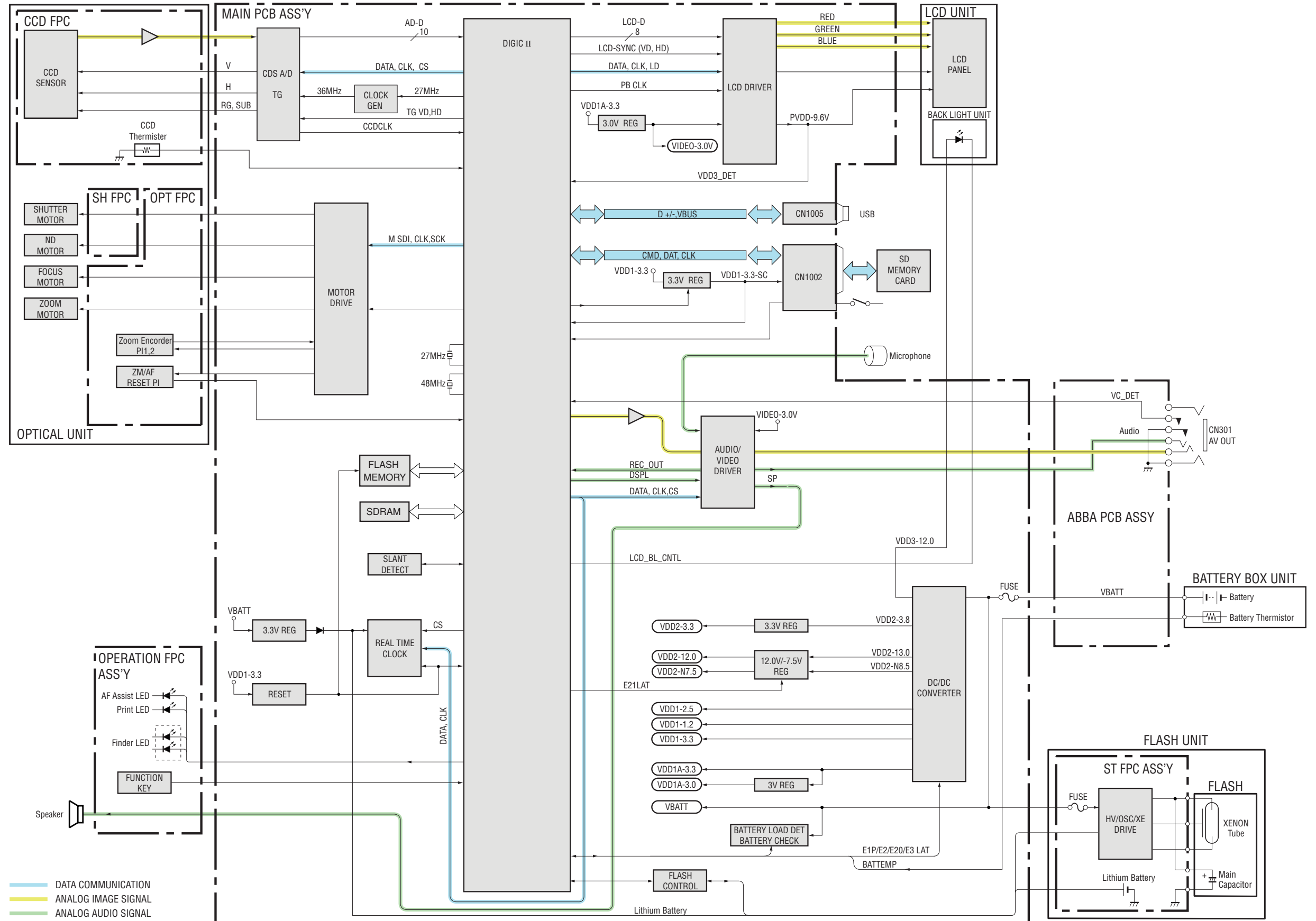
CN601	
1	GND
2	BATTHM
3	VBATT
CN602	
1	VBATT
2	GND
CN603	
1	SP+
2	SP-
CN604	
1	R(GND)
2	GND
3	Video
4	Audio
5	Detect
CN605	
1	BL_A
2	Not Connected
3	BL_C
4	Not Connected
5	BL_A
CN606	
A1	SP-
A2	SP+
A3	GND
A4	GND
A5	GND
A6	VBATT
A7	VBATT
A8	VBATT
A9	VDD1-1.2
A10	VDD1A-3.3
A11	VDD1-2.5
A12	VDD1-3.3
A13	VDD1-3.3
A14	E1PLAT
A15	E20LAT
A16	E2LAT
A17	E3LAT
A18	SCAN
A19	FND_LED_GREEN
A20	/MOVIE
A21	/LEFT
A22	/RIGHT
A23	/MENU
A24	Not Connected
A25	LCD_BL_CNTL
A26	VBATTEMP
A27	/DOWN
A28	/DISP
A29	/PLAY
A30	/ZOOM_TELE
B1	A_OUT
B2	V_OUT
B3	AVJACK_DET
B4	GND
B5	GND
B6	Not Connected
B7	VBATT
B8	VBATT
B9	VDD1-1.2

B10	VDD1-1.2
B11	VDD1-2.5
B12	VDD1-3.3
B13	VDD1-3.3
B14	VDD2-3.3
B15	VDD2-3.3
B16	VDD2-N8.5
B17	VDD2-13.0
B18	Not Connected
B19	PWR_LED_GREEN
B20	/SW1
B21	/ZOOM_WIDE
B22	AF_LED_CA
B23	/UP
B24	/SET
B25	DIRECT_PRT
B26	DIRECT_PRT_LED
B27	FND_LED_YELLOW
B28	FND_LED_ORANGE
B29	SW_POWER
B30	/SW2
CN607	
1	/DISP
2	/MENU
3	/DOWN
4	/RIGHT
5	/SET
6	/LEFT
7	/UP
8	/MOVIE
9	/PLAY
10	AF_LED_CA
11	/ZOOM_TELE
12	/ZOOM_WIDE
13	SCAN
14	/SW1
15	/SW2
16	VBAT_R
17	SW_POWER
18	PWR_LED_GREEN
19	FND_LED_ORANGE
20	FND_LED_GREEN
21	FND_LED_YELLOW
22	VDD1-3.3
23	DIRECT_PRT_LED
24	GND
25	/DIRECT_PRT

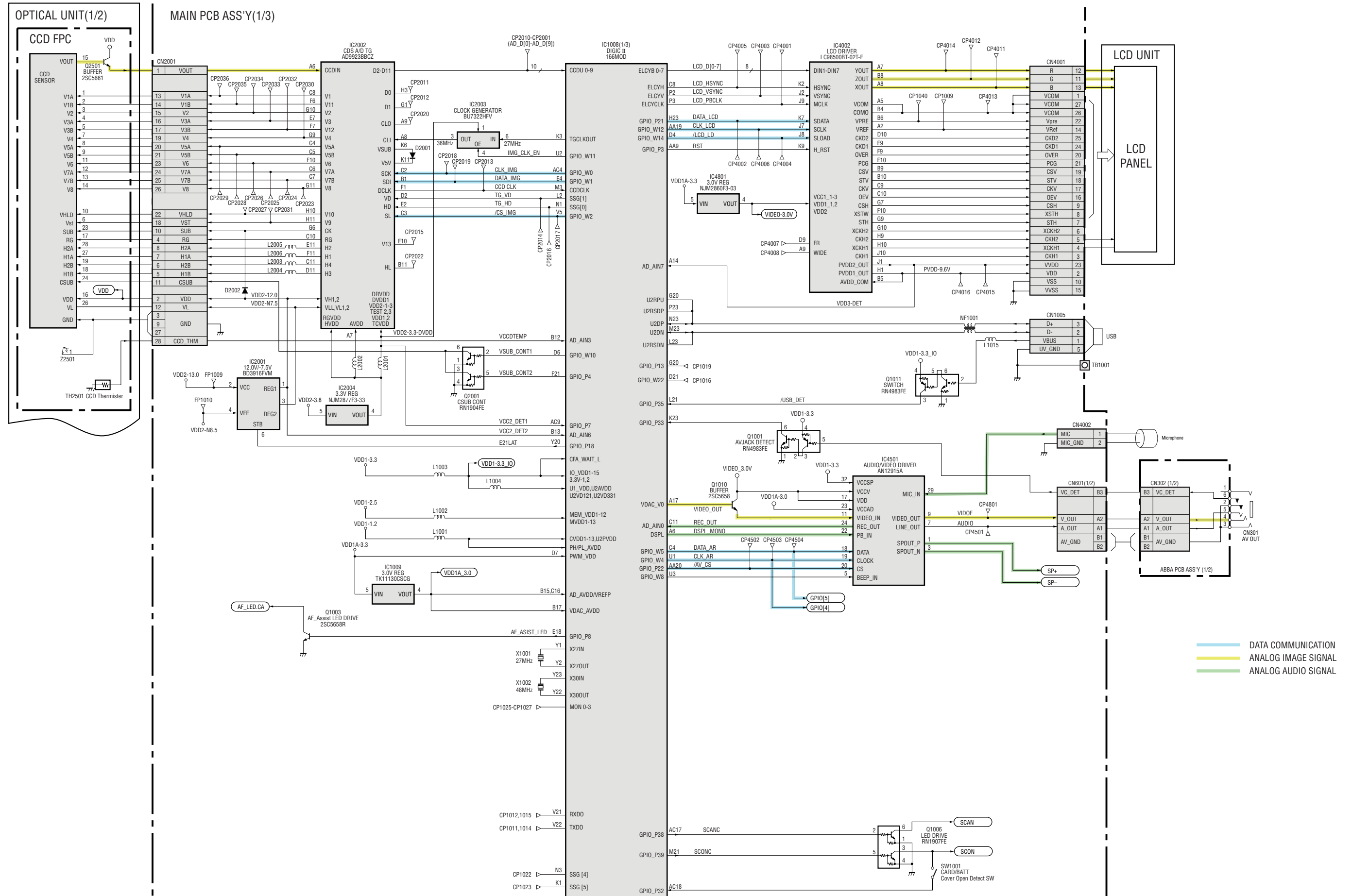
2. BLOCK DIAGRAMS

2.1 PowerShot SD630/DIGITAL IXUS 65/IXY DIGITAL 80

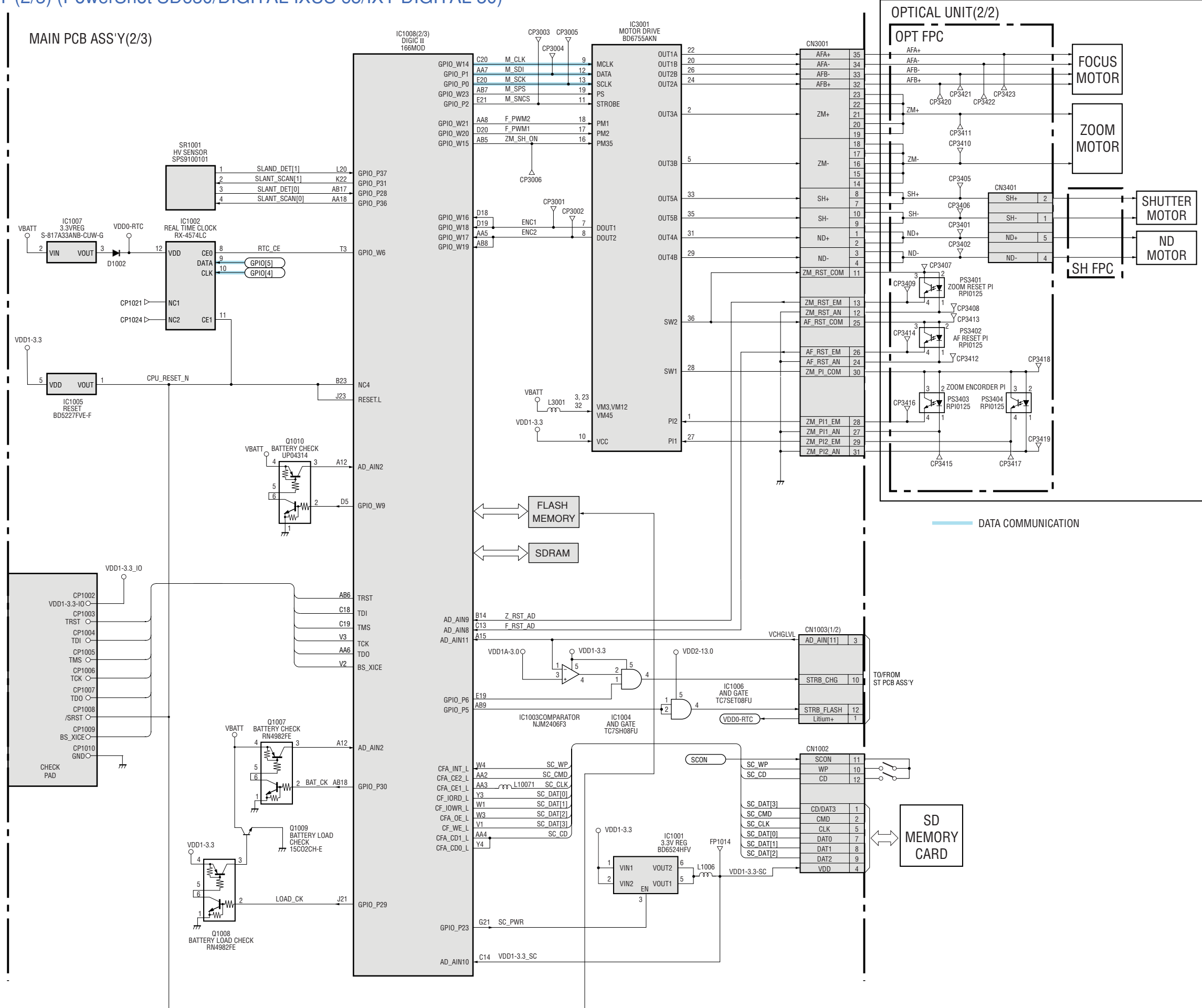
2.1.1 OVERALL



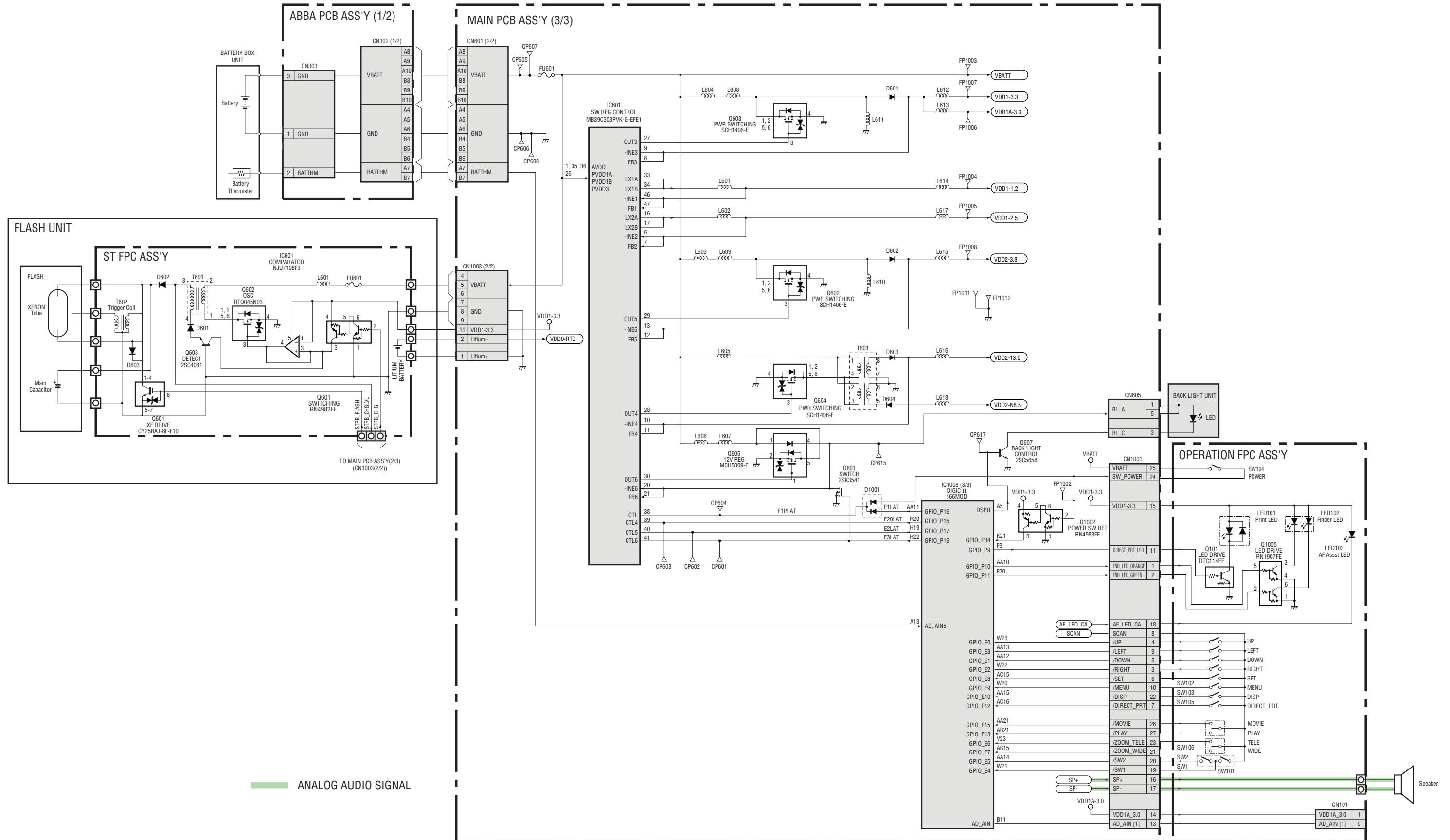
2.1.2 MAIN PCB ASS'Y (1/3) (PowerShot SD630/DIGITAL IXUS 65/IXY DIGITAL 80)



2.1.3 MAIN PCB ASS'Y (2/3) (PowerShot SD630/DIGITAL IXUS 65/IXY DIGITAL 80)

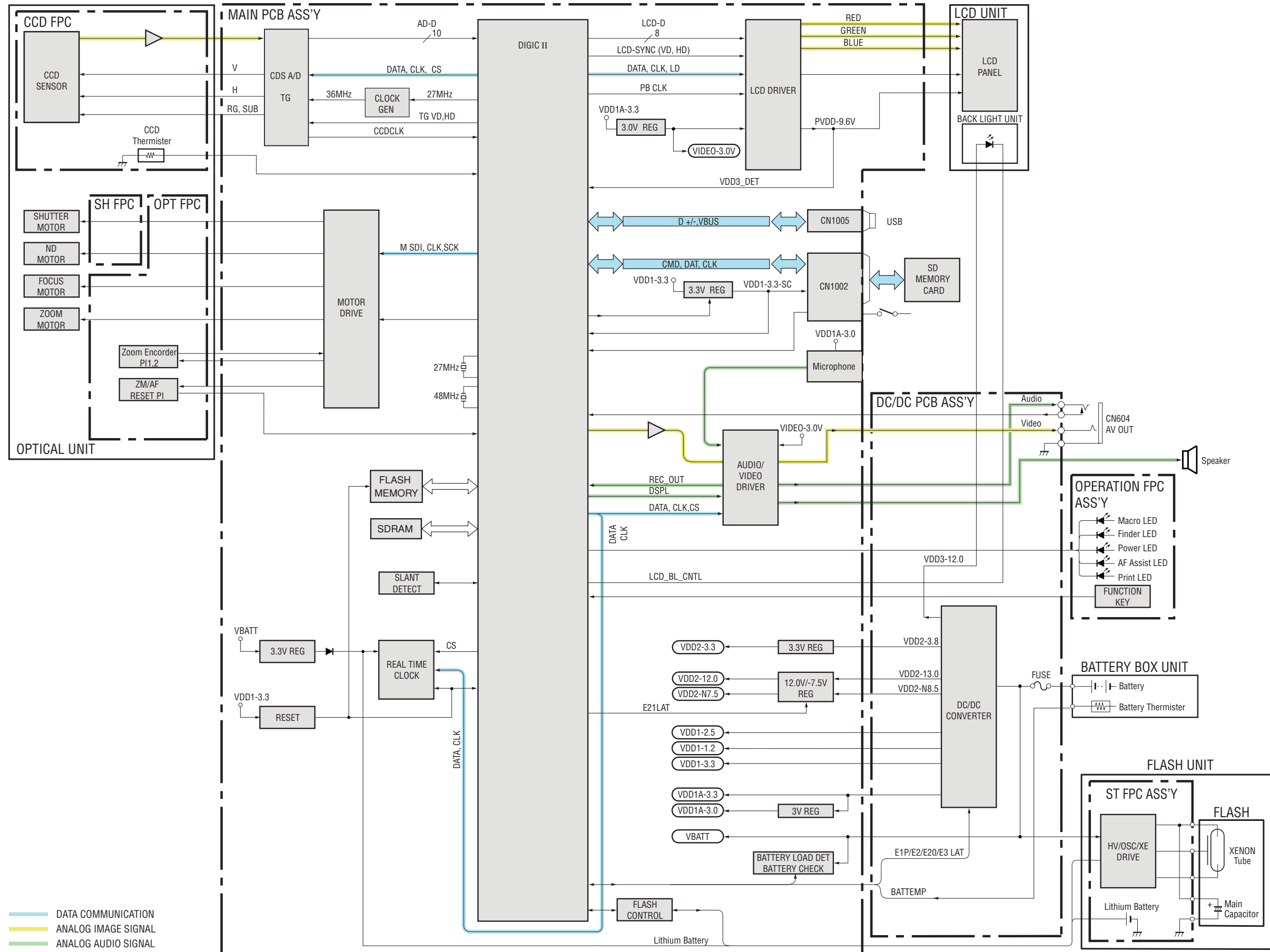


2.1.4 MAIN PCB ASS'Y (3/3) (PowerShot SD630/DIGITAL IXUS 65/IXY DIGITAL 80)

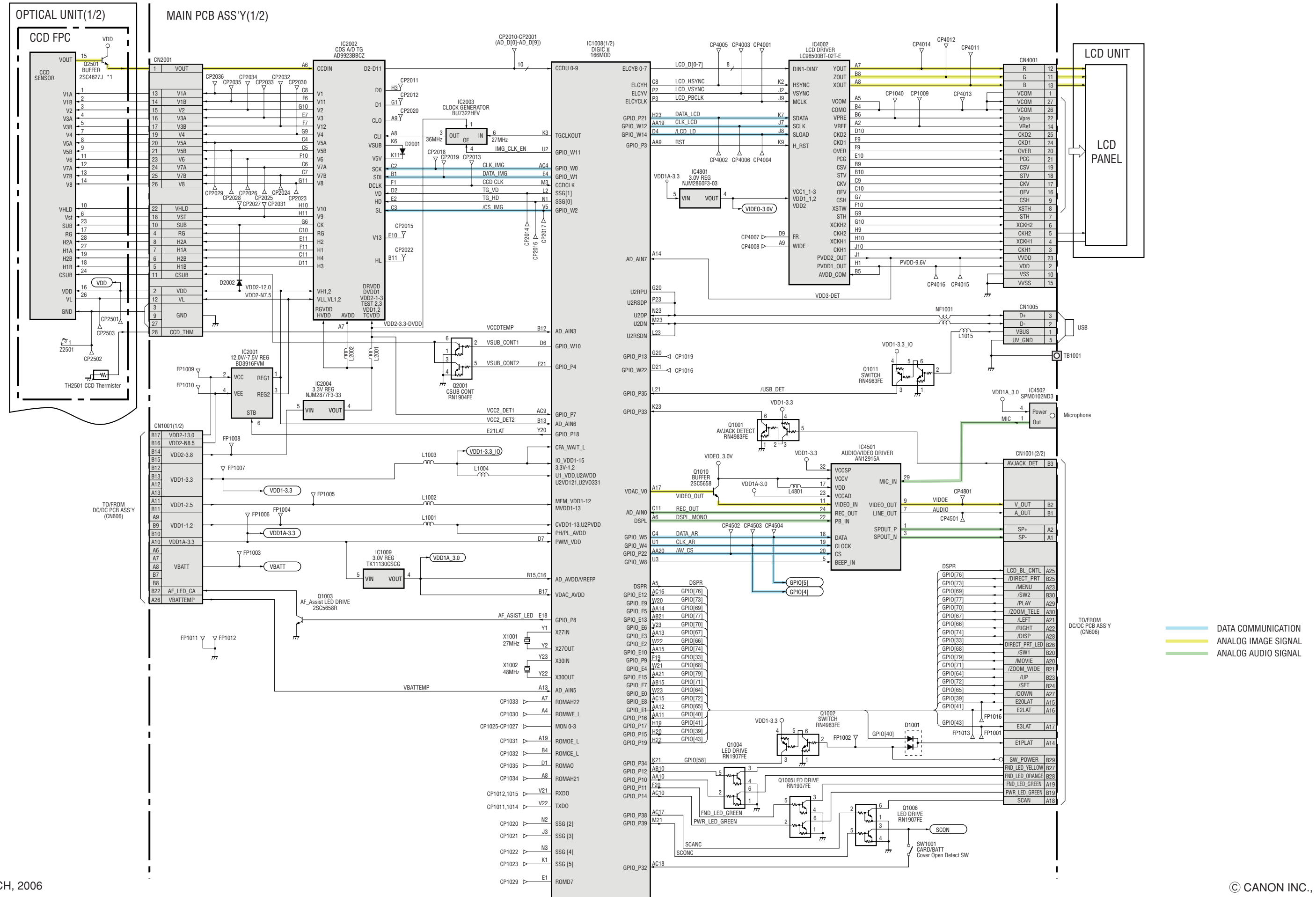


2.2 PowerShot SD600/DIGITAL IXUS 60/IXY DIGITAL 70

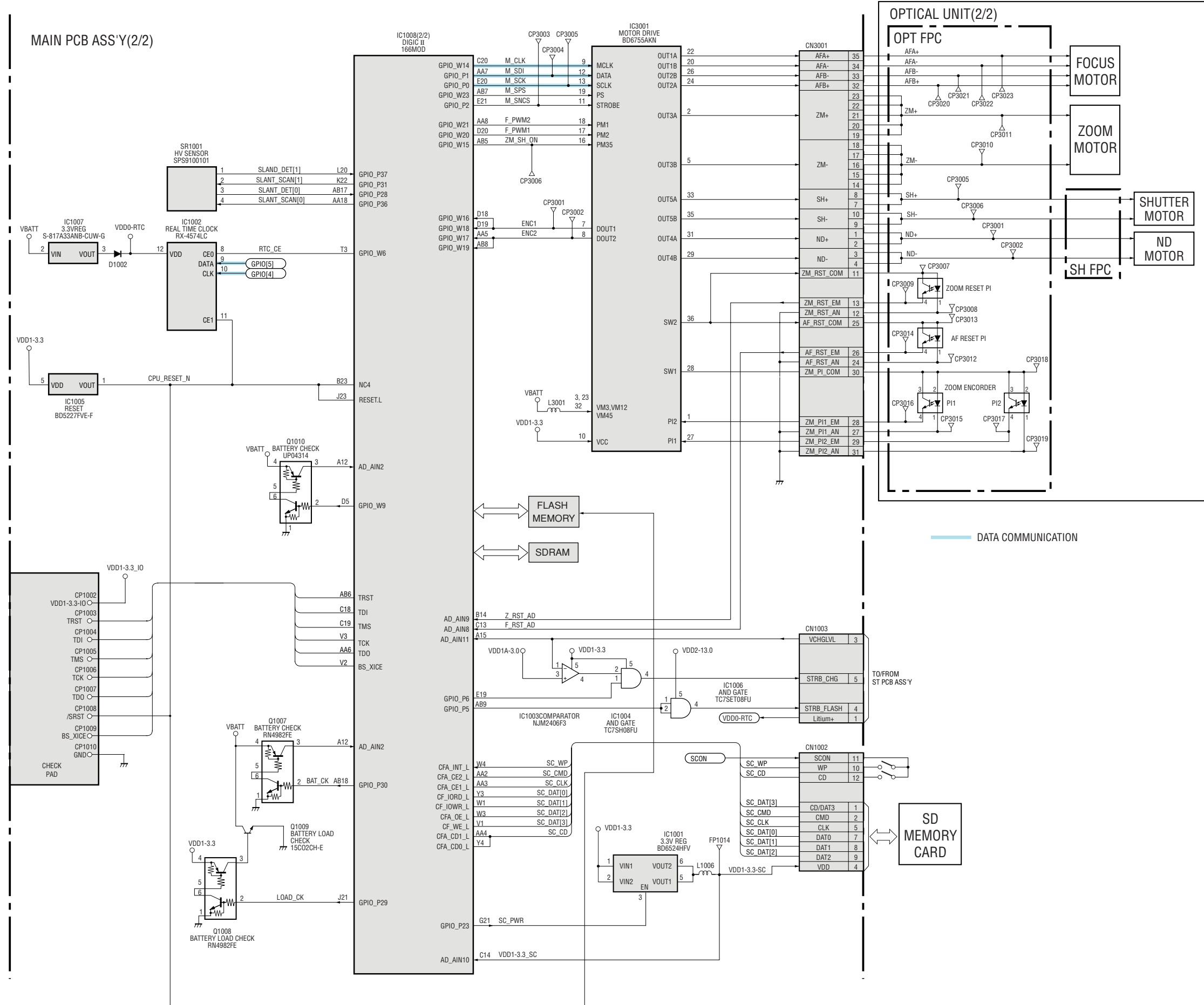
2.2.1 OVERALL



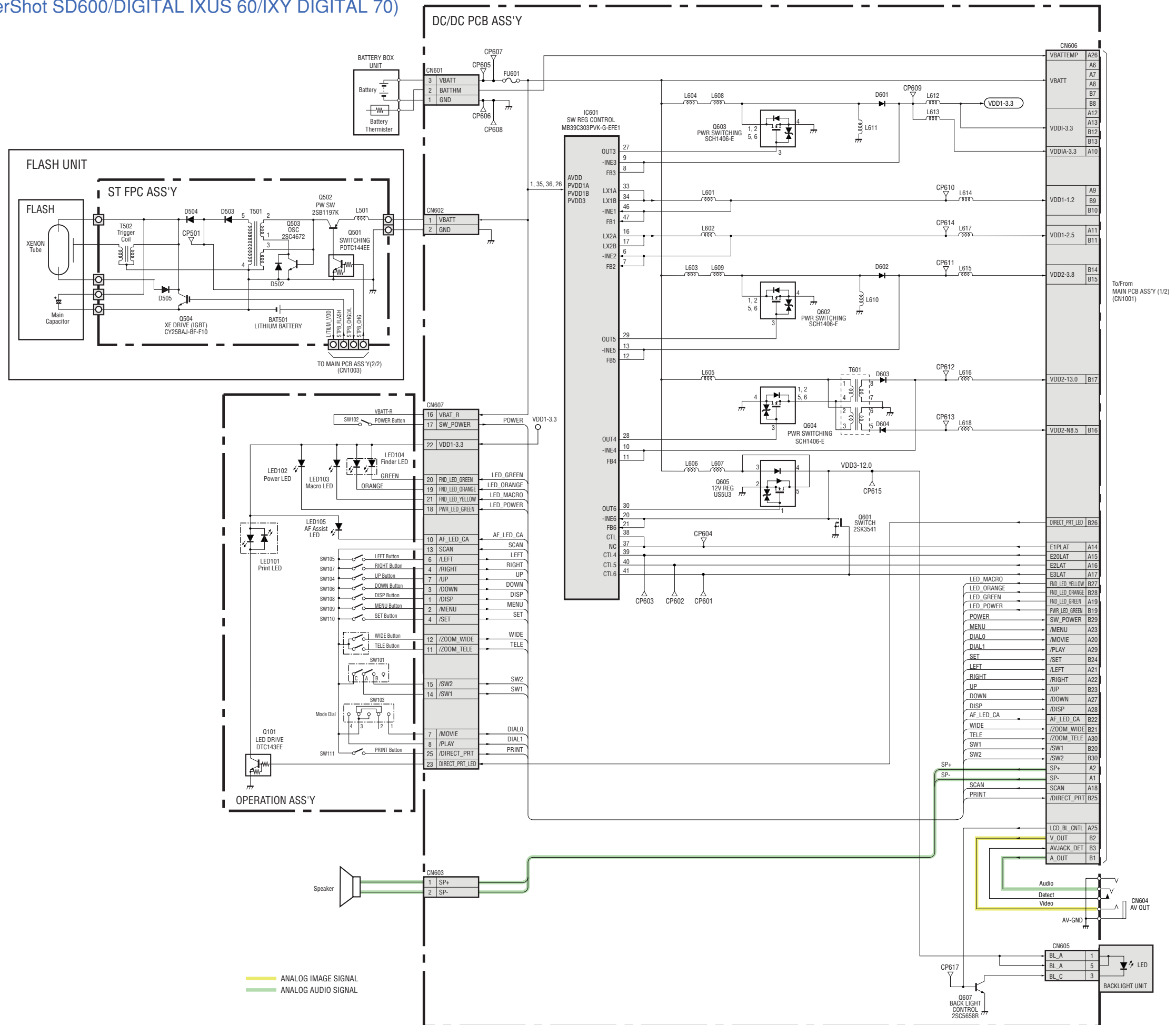
2.2.2 MAIN PCB ASS'Y (1/2) (PowerShot SD600/DIGITAL IXUS 60/IXY DIGITAL 70)



2.2.3 MAIN PCB ASS'Y (2/2) (PowerShot SD600/DIGITAL IXUS 60/IXY DIGITAL 70)



2.2.4 DC/DC PCB ASS'Y (PowerShot SD600/DIGITAL IXUS 60/IXY DIGITAL 70)

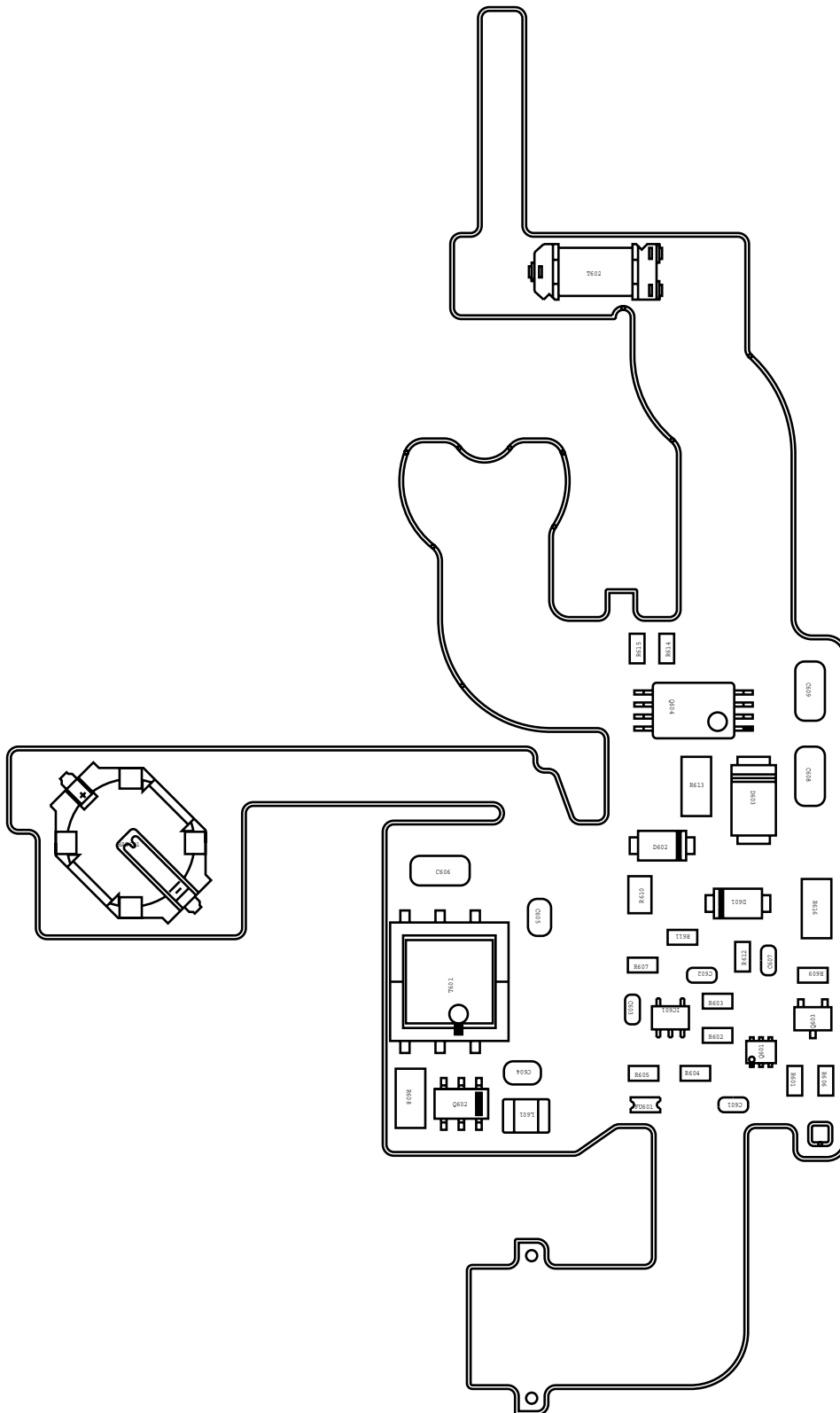


To/From MAIN PCB ASS'Y (1/2) (CN1001)

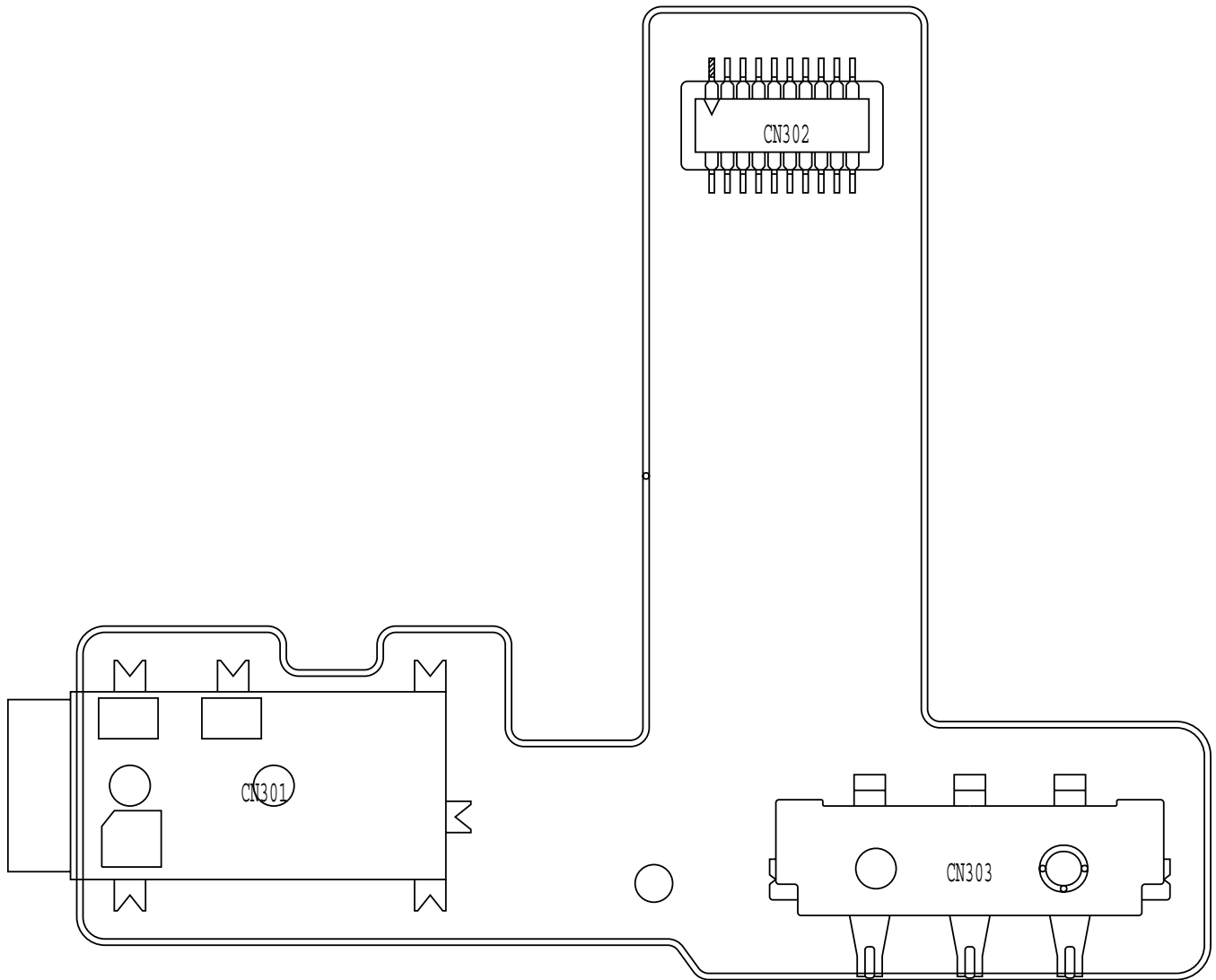
2.3 Abbreviation in Block Diagrams

Abbreviation	Nominal name	Description
ADC (A/D)	Analog-to-Digital Converter	
AE	Automatic Exposure control	
AF	Automatic Focussing control	
R-Y/B-Y		Color difference signals of TV system
BPF	Band-Pass Filter	
BUFFER	Buffer circuit	
C	Chrominance signal	Color component signal of TV system
CCD	Charge-Coupled Device	
CDS	Correlated Double Sampling system	
COMP.VIDEO	Composite video signal	
COMPARATOR	Voltage comparator	
CPU	Central Processing Unit	
DAC (D/A)	Digital-to-Analog Converter	
DRAM	Dynamic Random Access Memory	Memory with which read and write are freely possible.
DIP	Digital Imaging Processor	Processes the picture data
EEPROM	Electrically Erasable PROM	
EVF	Electronic View Finder	
FET	Field Effect Transistor	
FLASH MEMORY		Non-volatile memory with which write and read are freely possible.
HPF	High-Pass Filter	
I/F	InterFace	Interconnects 2 devices or circuits.
IGBT	Insulated Gate Bipolar Transistor	Conductivity-modulation type FET transistor
IR	InfraRed ray	
IRIS	Iris	
LCD	Liquid Crystal Device	
LED	Light Emitting Diode	
LPF	Low-Pass Filter	
NTSC	National Television System Committees	NTSC color TV system developed in USA
OP Amp	OPERational Amplifier	
OSC	OSCillator	
PAL	Phase Alternating by Line	PAL color TV system developed in Germany
PLL	Phase Locked Loop	
PROM	Programmable Read Only Memory	Non-volatile memory in which program can be written.
PWM	Pulse Width Modulation	
REG.	REGulated power supply	
RTC	Real Time Clock	Reference clock oscillator
SDRAM	Synchronous Dynamic RAM	DRAM whose bus interface is synchronous.
SW REG	SWitching REGulator	Switching type regulated power supply device
TG	Timing Generator	
USB	Universal Serial Bus	USB type serial data communication system
VCO	Voltage Controlled Oscillator	
VCXO	Voltage Controlled X'tal Oscillator	
XE	Xenon Tube	
Y	Y-signal	Luminance component signal of TV system

3.2 ST FPC ASS'Y (PowerShot SD630/DIGITAL IXUS 65/IXY DIGITAL 80)

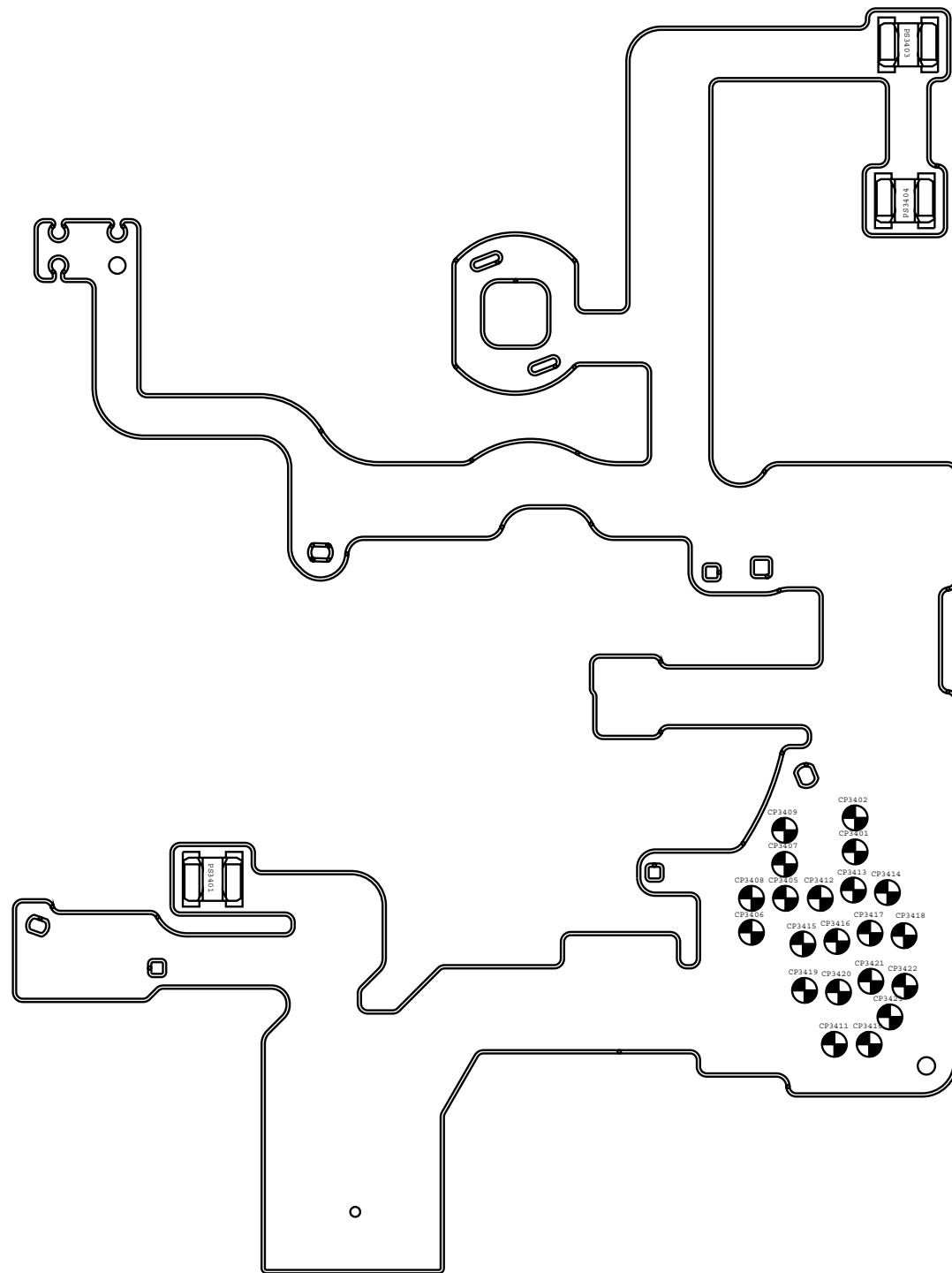


3.3 ABBA PCB ASS'Y (PowerShot SD630/DIGITAL IXUS 65/IXY DIGITAL 80)

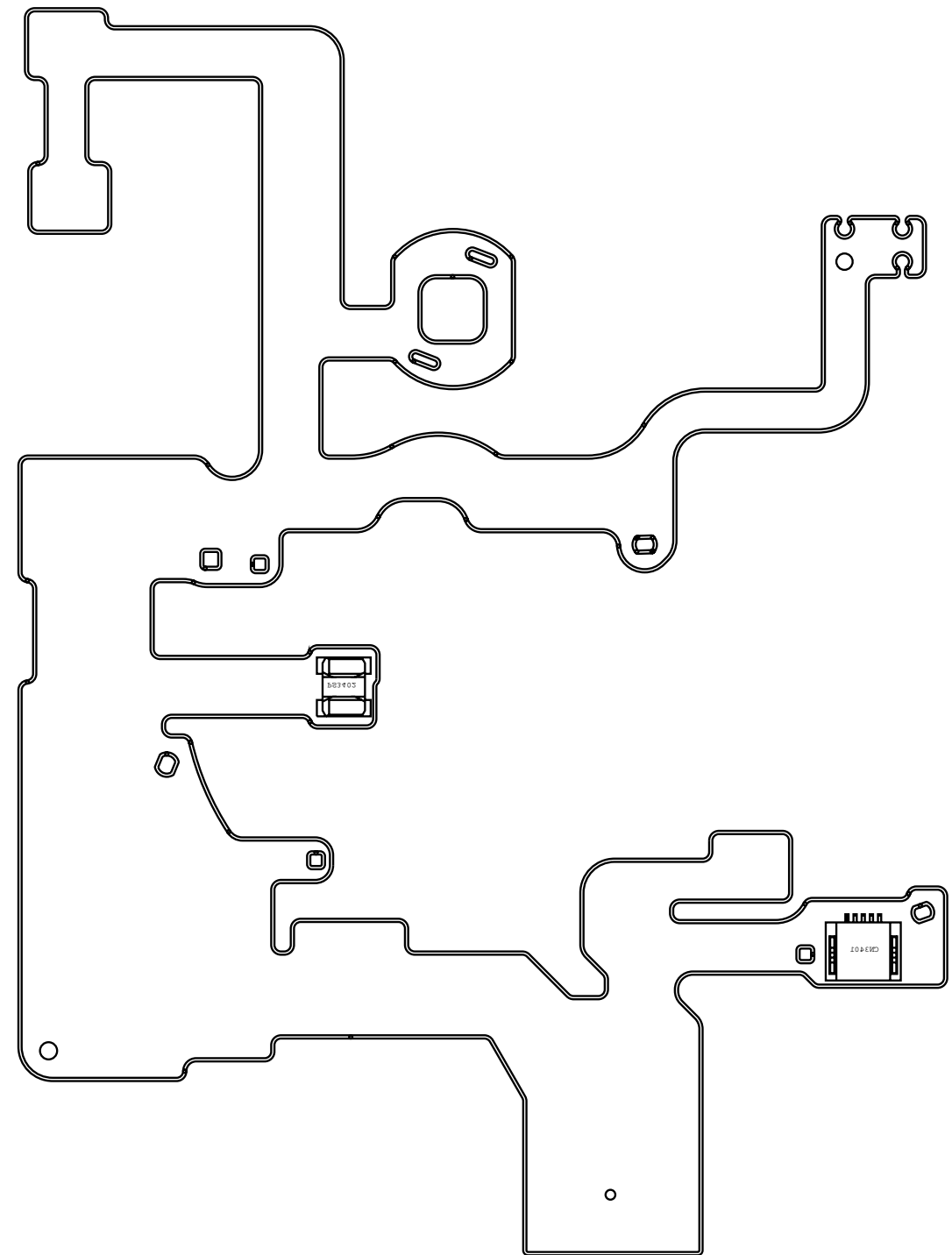


3.4 OPT FPC (PowerShot SD630/DIGITAL IXUS 65/IXY DIGITAL 80)

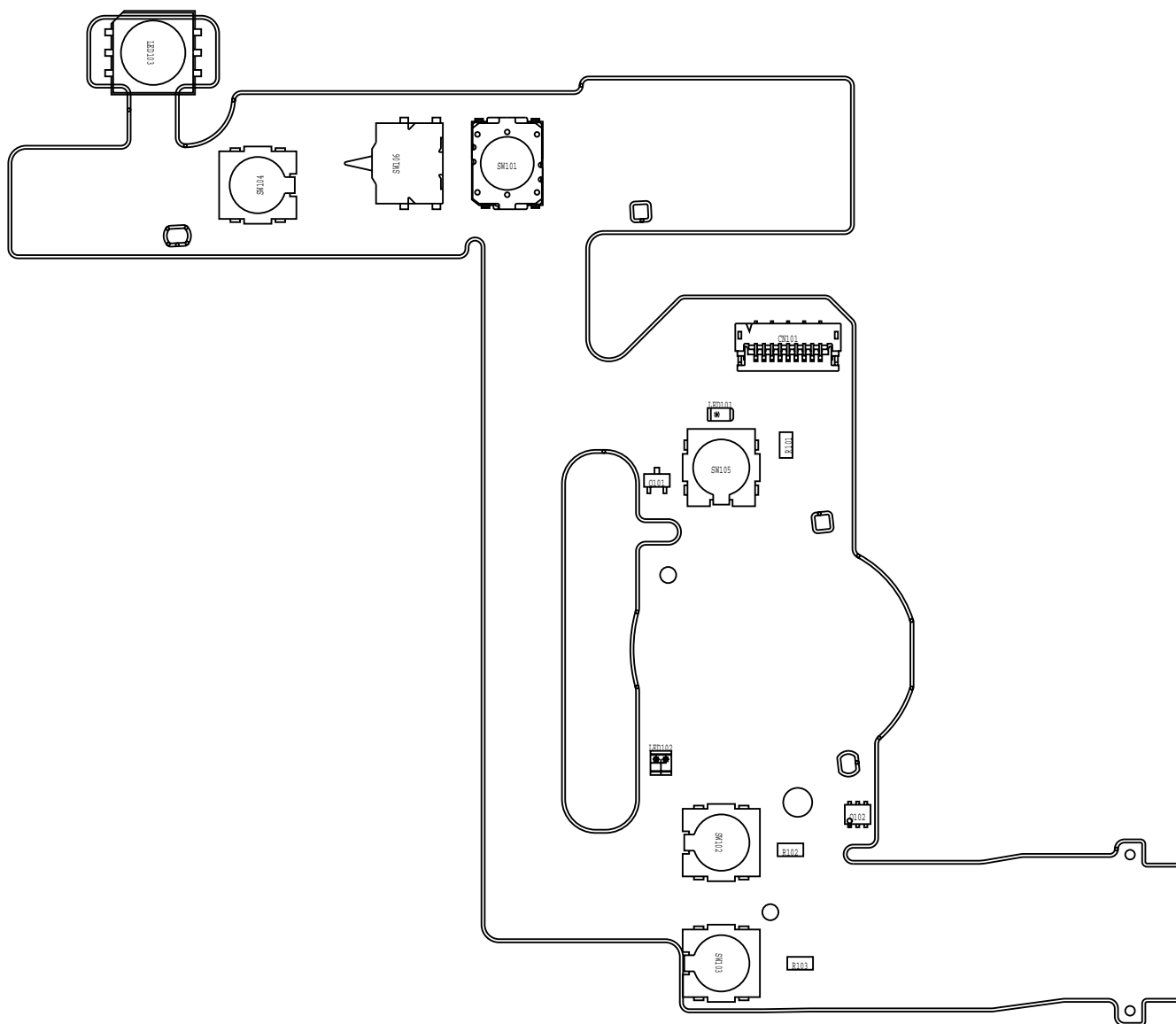
OPT FPC (Primary Side)



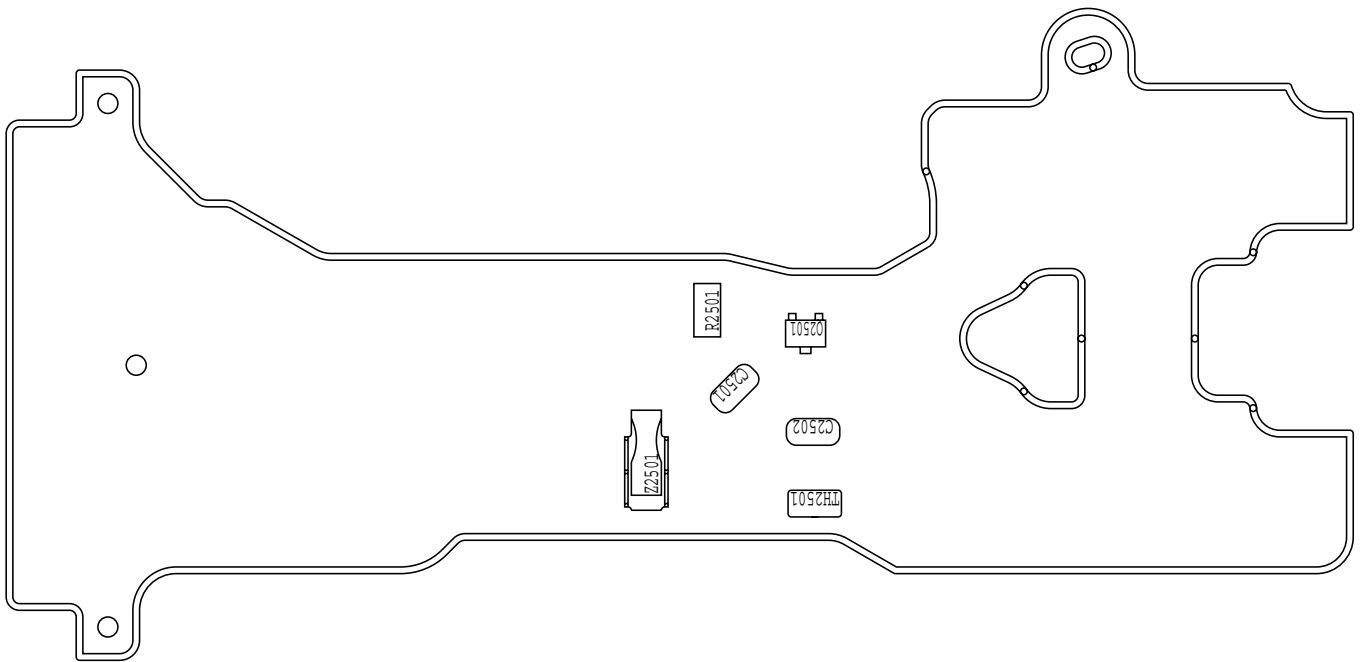
OPT FPC (Secondary Side)



3.5 OPERATION FPC ASS'Y (PowerShot SD630/DIGITAL IXUS 65/IXY DIGITAL 80)

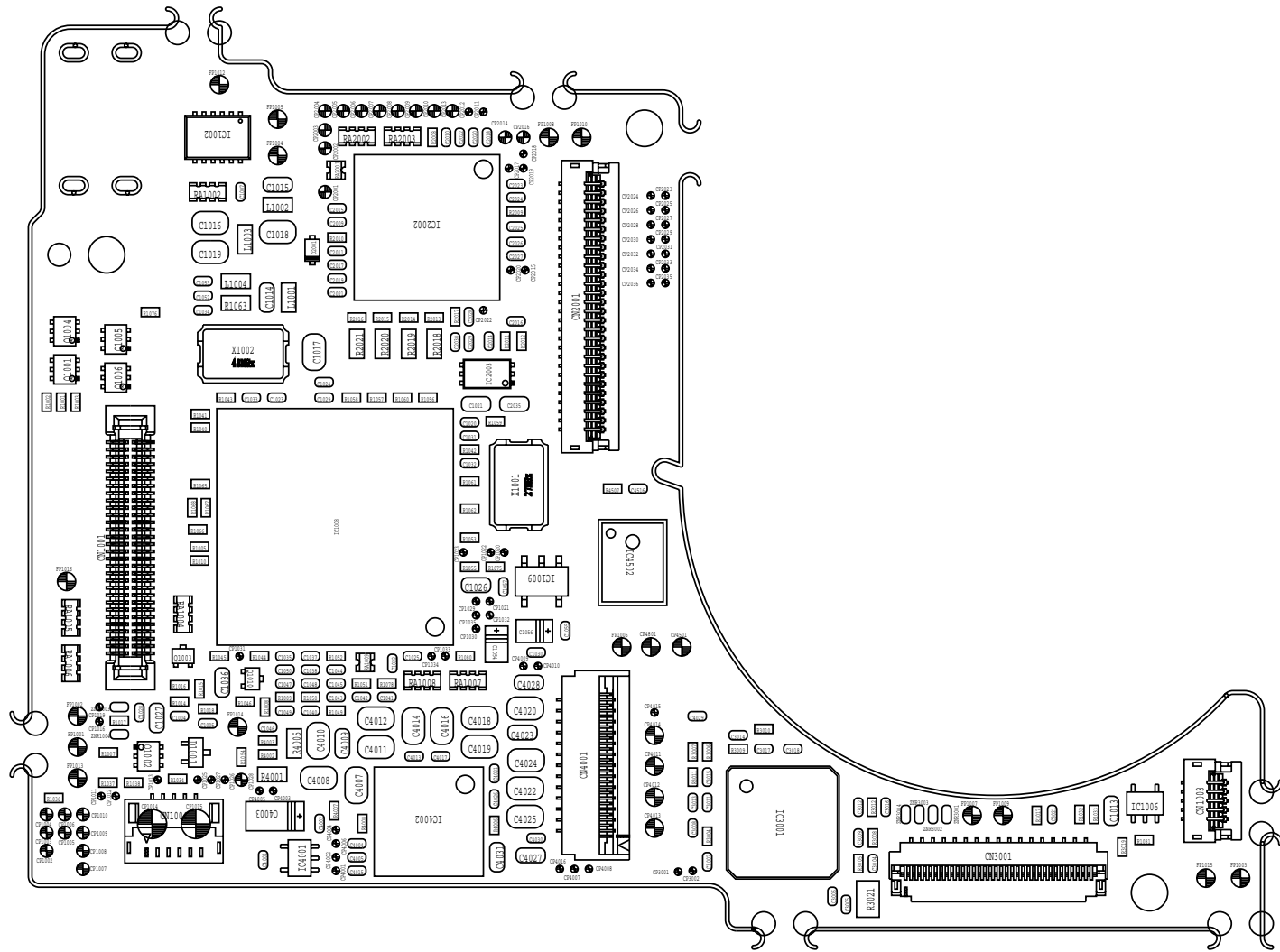


3.6 CCD FPC (PowerShot SD630/DIGITAL IXUS 65/IXY DIGITAL 80)

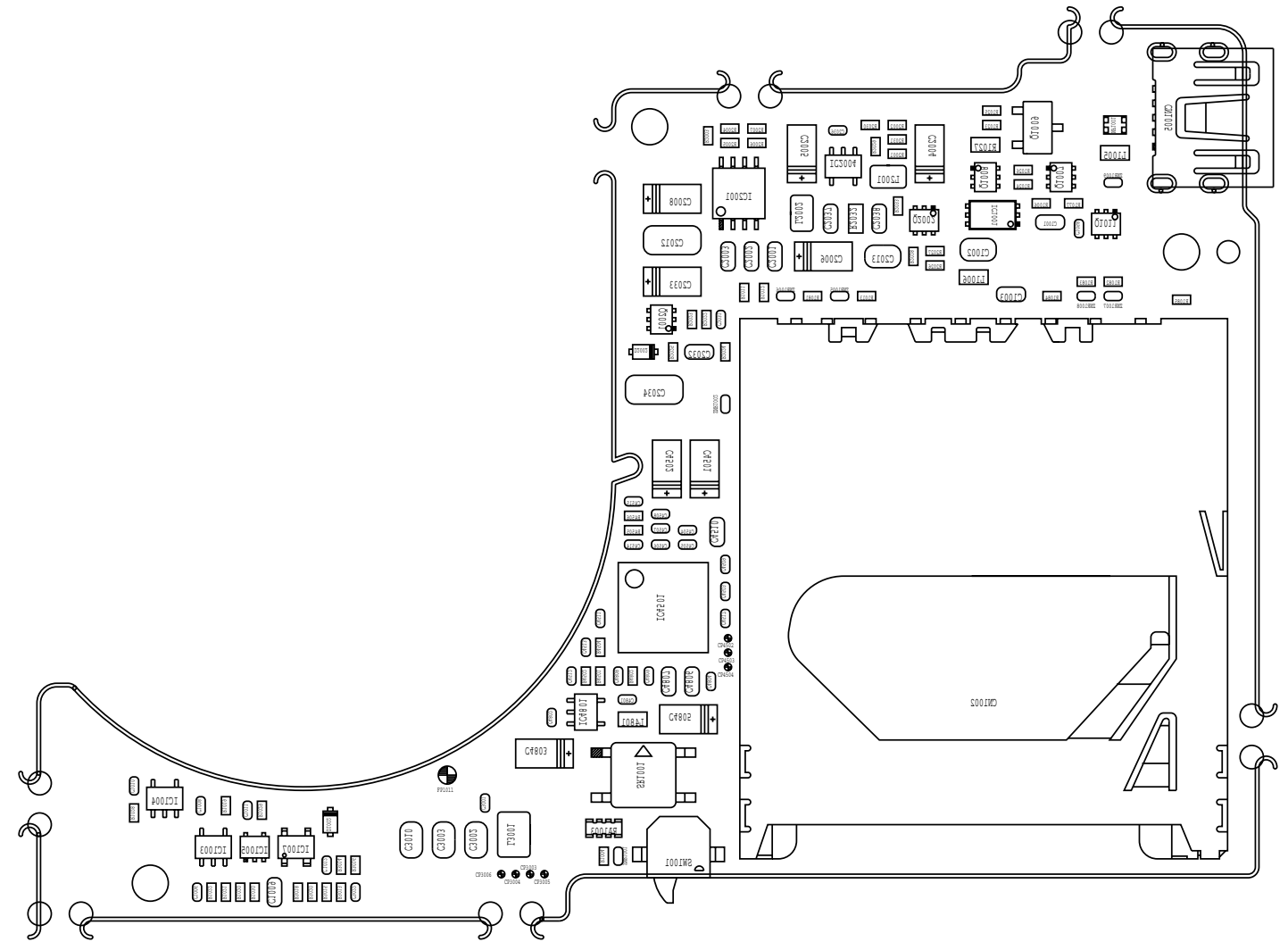


3.7 MAIN PCB ASS'Y (PowerShot SD600/DIGITAL IXUS 60/IXY DIGITAL 70)

MAIN PCB ASS'Y (Primary Side)

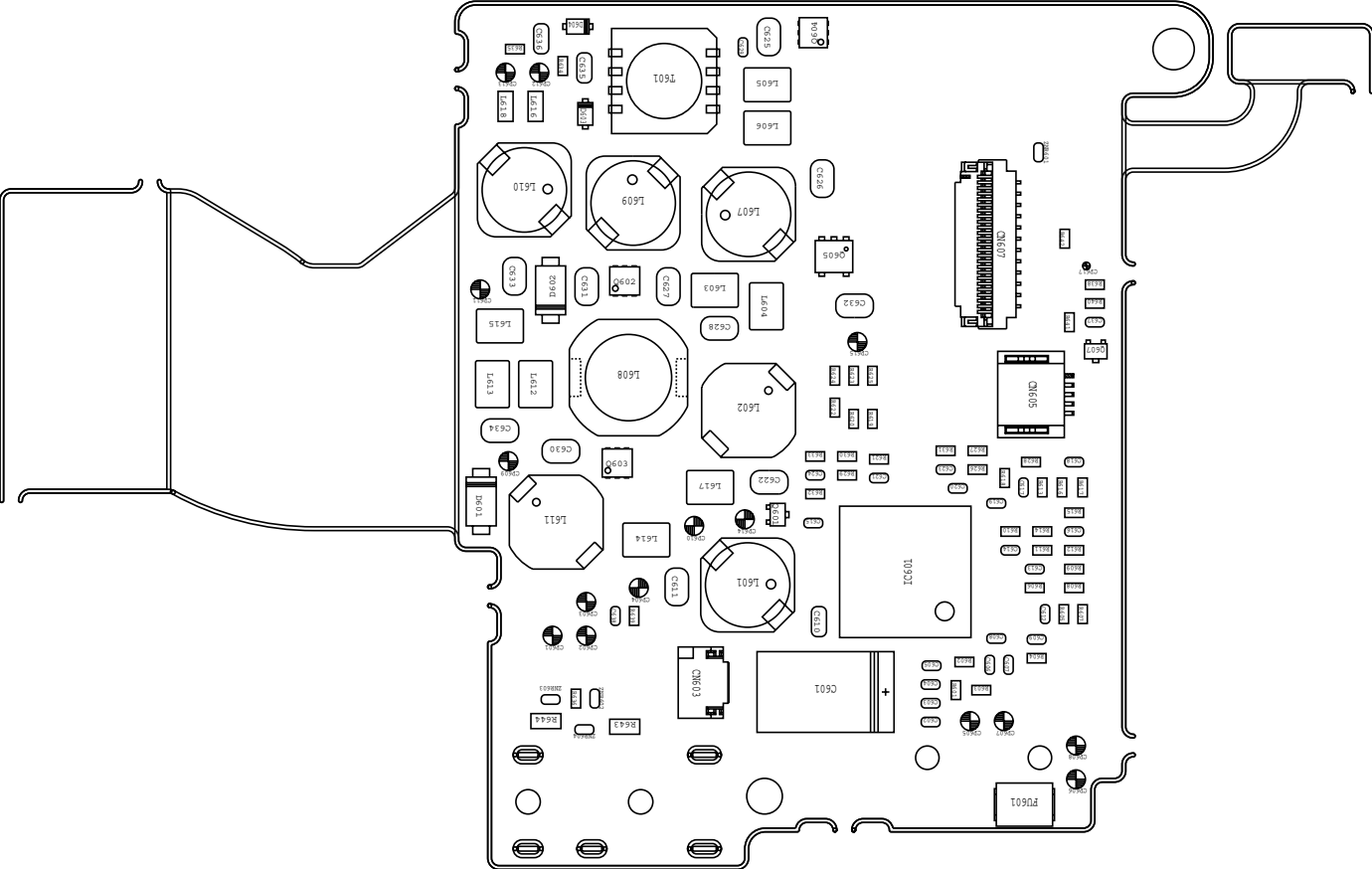


MAIN PCB ASS'Y (Secondary Side)

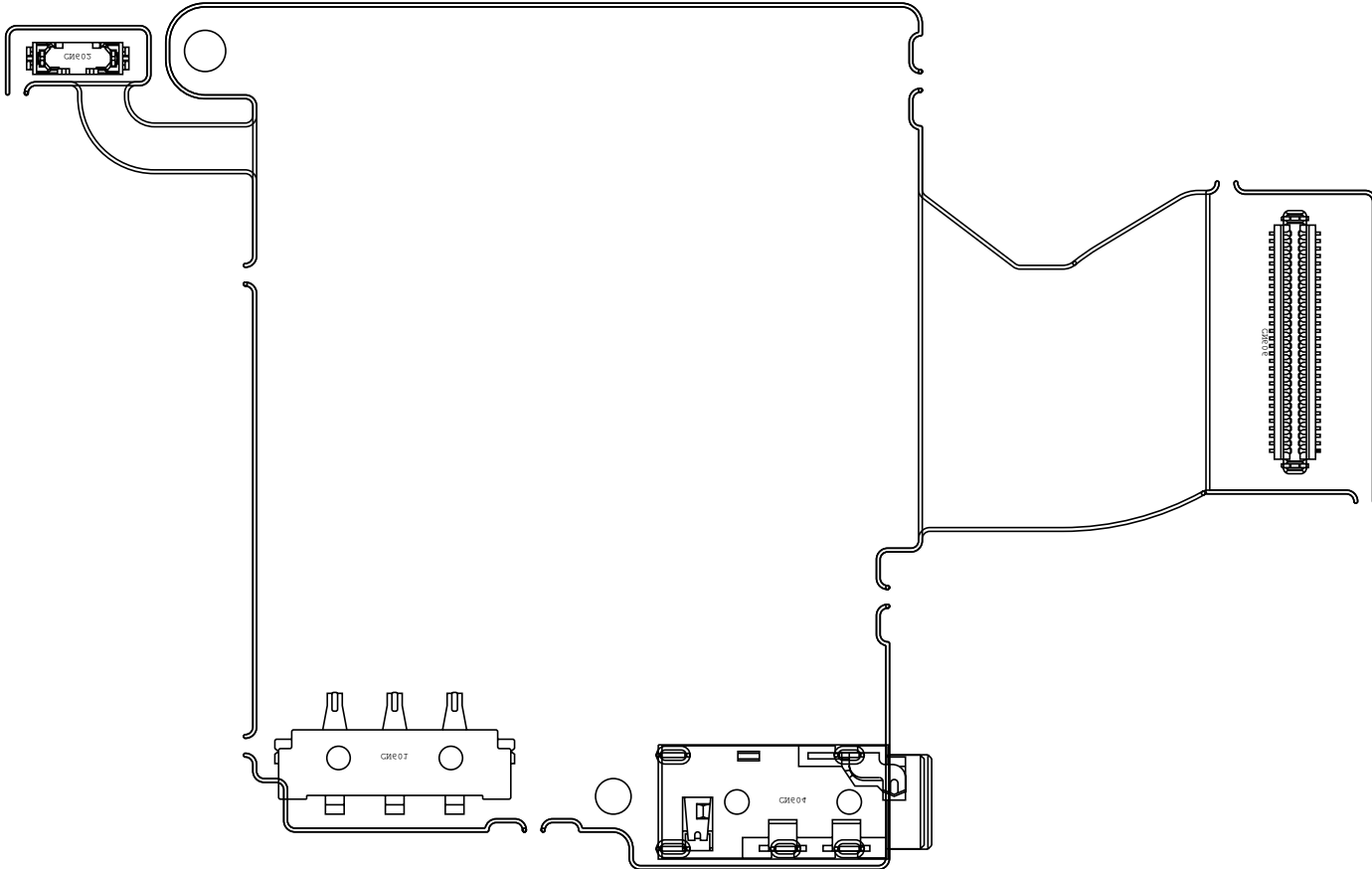


3.8 DC/DC PCB ASS'Y (PowerShot SD600/DIGITAL IXUS 60/IXY DIGITAL 70)

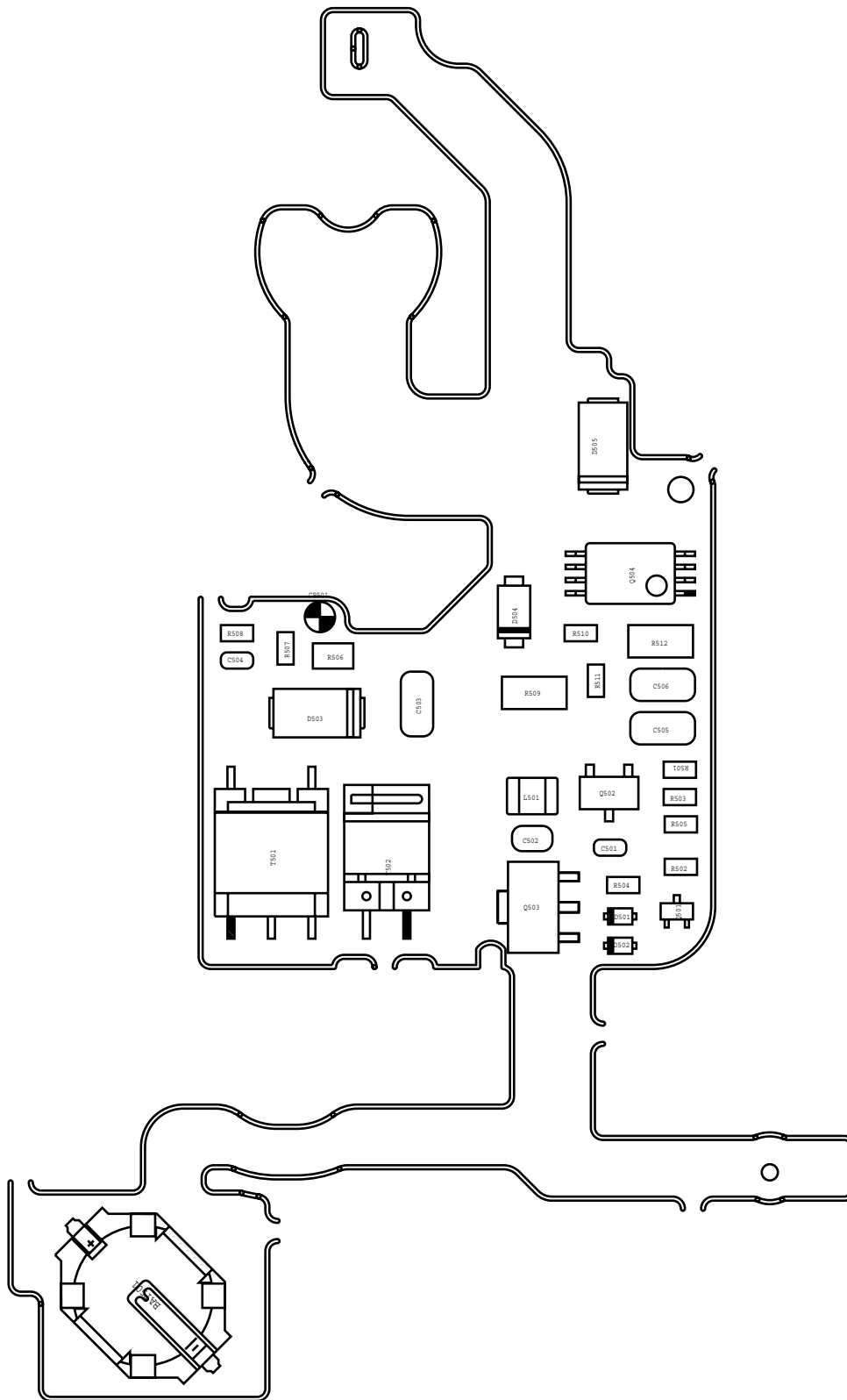
DC/DC PCB ASS'Y (Primary Side)



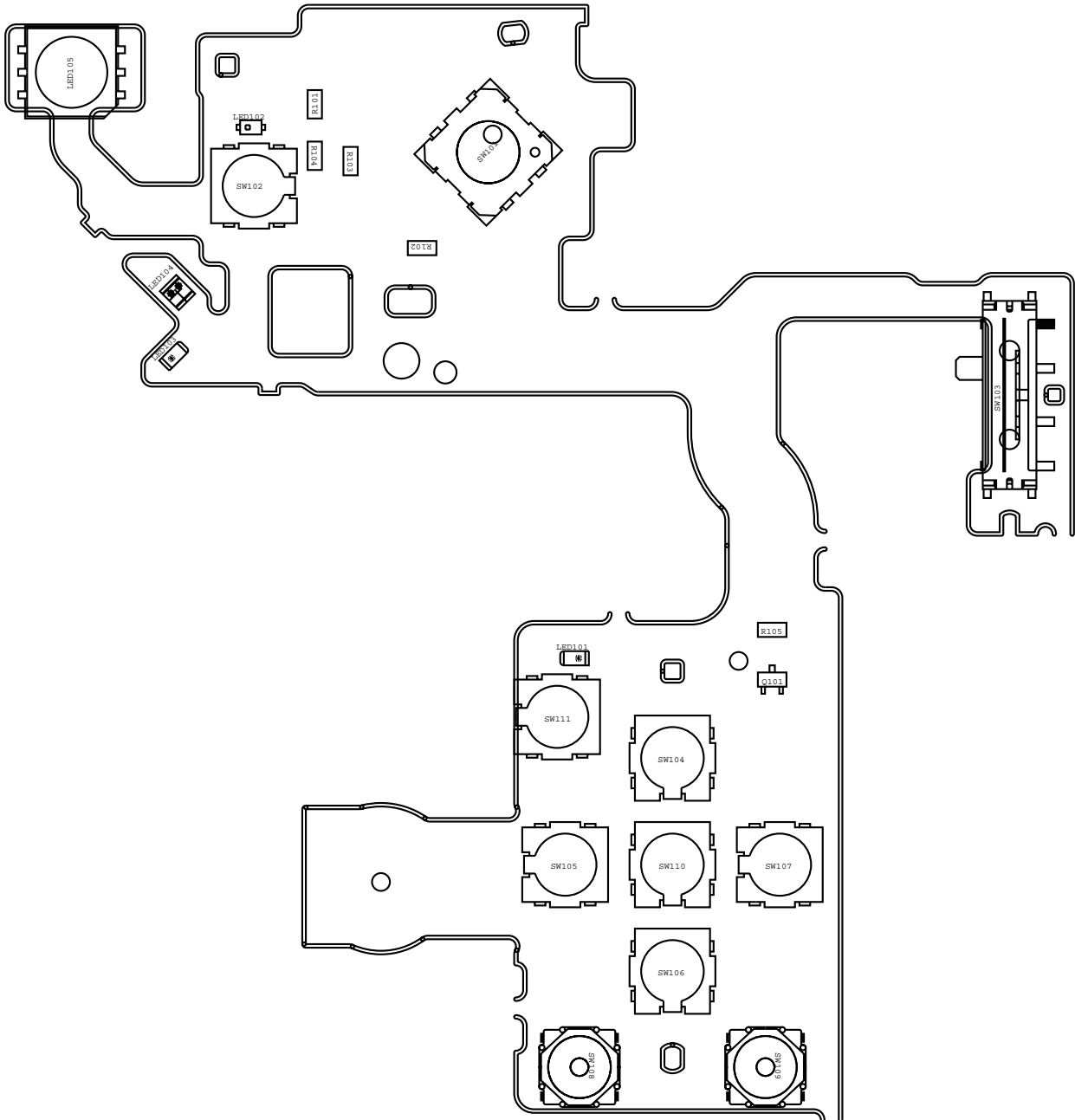
DC/DC PCB ASS'Y (Secondary Side)



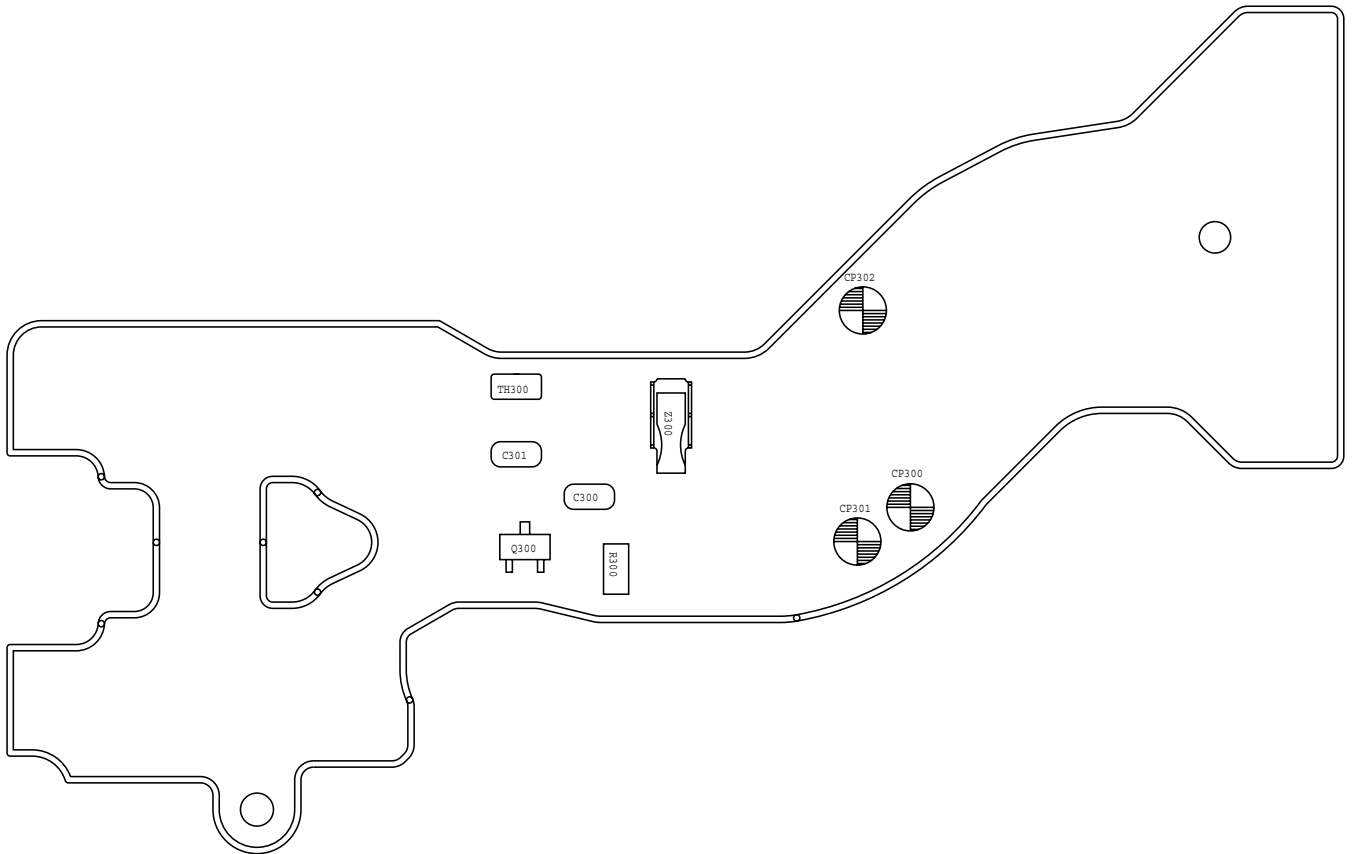
3.9 ST FPC ASS'Y (PowerShot SD600/DIGITAL IXUS 60/IXY DIGITAL 70)



3.10 OPERATION FPC ASS'Y (PowerShot SD600/DIGITAL IXUS 60/IXY DIGITAL 70)



3.11 CCD FPC (PowerShot SD600/DIGITAL IXUS 60/IXY DIGITAL 70)



3.12 LCD FPC (PowerShot SD600/DIGITAL IXUS 60/IXY DIGITAL 70)

